



TrueForce LED Industrial and Retail (Highbay – HPI/SON/HPL)

TrueForce Core HB 200-160W E40 865 WB GM

Philips TrueForce LED Industrial and Retail lamps give you a quick and easy payback solution to replace HID lamps in Highbay application. The solution gives you the LED benefits of energy-efficiency and long-lifetime, plus they come for a low initial investment. With unique lamp design and compatibility, you can directly retrofit HID lamps with TrueForce LED lamps without changing the fixtures or gear. Multiple beam angle options and high colour rendering index enhance the lighting distribution while creating a comfortable, safe and high productivity environment.

Product data

| General Information | | Correlated Color Temperature (Nom) | |
|------------------------|---------------------|---------------------------------------|-------------|
| Cap-Base | E40 [E40] | 6500 K | |
| EU RoHS compliant | Yes | Luminous Efficacy (rated) (Nom) | 125.00 lm/W |
| Nominal Lifetime (Nom) | 25000 h | Color Consistency | <6 |
| Switching Cycle | 50000X | Color Rendering Index (Nom) | 80 |
| Technical Type | 160-400W | LLMF At End Of Nominal Lifetime (Nom) | 70 % |
| Light Technical | | Operating and Electrical | |
| Color Code | 865 [CCT of 6500K] | Input Frequency | 50 to 60 Hz |
| Beam Angle (Nom) | 130 ° | Power (Nom) | 160 W |
| Luminous Flux (Nom) | 20000 lm | Lamp Current (Nom) | 1900 mA |
| Color Designation | Cool Daylight | Wattage Equivalent | 400 W |
| | | Starting Time (Nom) | 0.7 s |

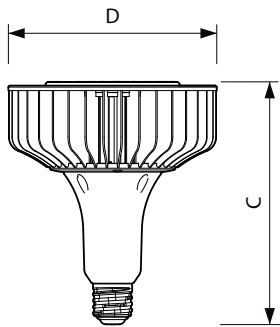
TrueForce LED Industrial and Retail (Highbay – HPI/SON/HPL)

| | |
|---------------------------------|-----------|
| Warm Up Time to 60% Light (Nom) | 0.7 s |
| Power Factor (Nom) | 0.9 |
| Voltage (Nom) | 110-277 V |
| Temperature | |
| T-Case Maximum (Nom) | 100 °C |
| Controls and Dimming | |
| Dimmable | No |
| Approval and Application | |
| Energy Efficiency Label (EEL) | A+ |

| | |
|---------------------------------|--|
| Product Data | |
| Full product code | 871869676938600 |
| Order product name | TrueForce Core HB 200-160W E40 865 WB GM |
| EAN/UPC - Product | 8718696769386 |
| Order code | 929001812708 |
| Numerator - Quantity Per Pack | 1 |
| Numerator - Packs per outer box | 2 |
| Material Nr. (12NC) | 929001812708 |
| Net Weight (Piece) | 1.300 kg |

Warnings and Safety

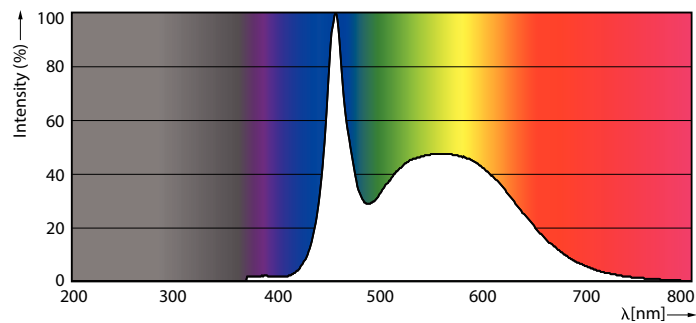
Dimensional drawing



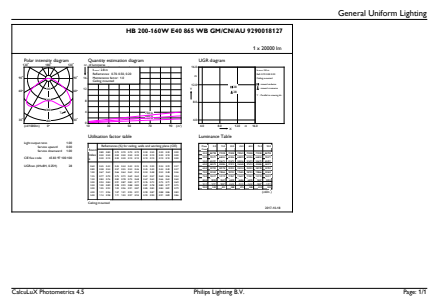
Bulb T50 180-400W 20000lm 6500K E40 ND

| Product | D | C |
|--|--------|--------|
| TrueForce Core HB 200-160W E40 865 WB GM | 211 mm | 252 mm |

Photometric data



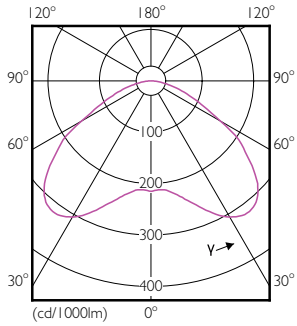
400W E40 T50



400W E40 T50 WB 130D 865 6500K

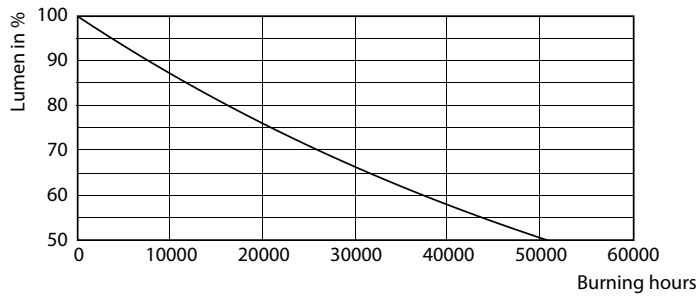
TrueForce LED Industrial and Retail (Highbay – HPI/SON/HPL)

Photometric data

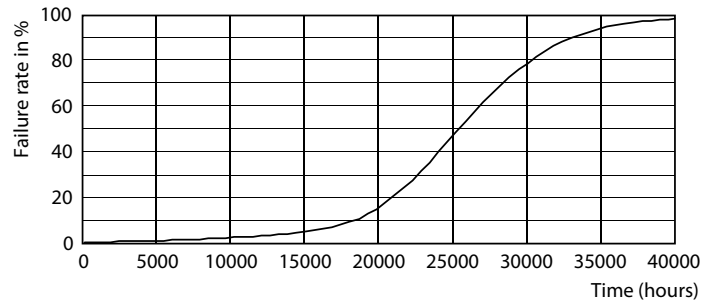


400W E40 T50 130D 865 6500K

Lifetime



250W E40 Others FR



250W E40 Others FR

